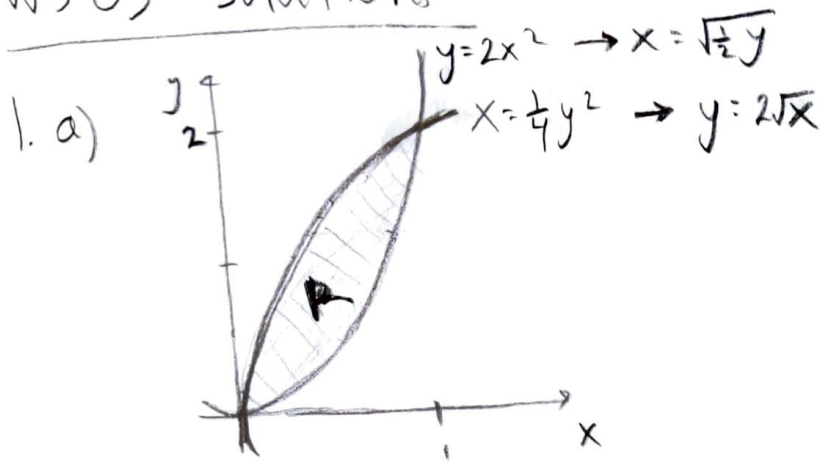


WS-03 solutions



b) **G** Washers:  $\int_0^1 \pi \left[ (2\sqrt{x})^2 - (2x^2)^2 \right] dx$

shells:  $\int_0^2 2\pi y \left[ \sqrt{\frac{1}{2}y} - \frac{1}{4}y^2 \right] dy$

c)  $\hookrightarrow$  Washers:  $\int_0^2 \pi \left[ \left( \sqrt{\frac{1}{2}y} \right)^2 - \left( \frac{1}{4}y^2 \right)^2 \right] dy$

shells:  $\int_0^1 2\pi x \left[ 2\sqrt{x} - 2x^2 \right] dx$