

CP230 – Problem Set 6

Problem 3.1 [H&H]

Exercise 3.1 Given the input waveforms shown in Figure 3.61, sketch the output, Q , of an SR latch.

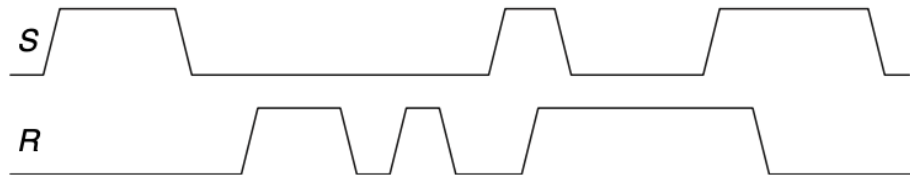


Figure 3.61 Input waveforms of SR latch for Exercise 3.1

Problem 3.3 [H&H]

Exercise 3.3 Given the input waveforms shown in Figure 3.63, sketch the output, Q , of a D latch.

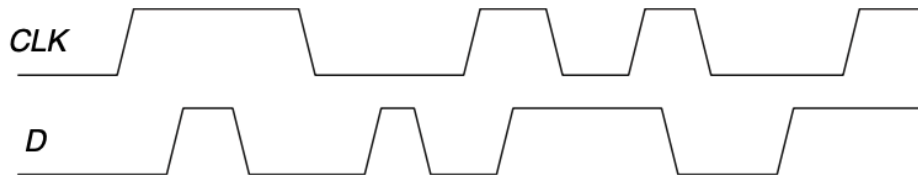


Figure 3.63 Input waveforms of D latch or flip-flop for Exercises 3.3 and 3.5

Problem 3.4 [H&H]

Exercise 3.4 Given the input waveforms shown in Figure 3.64, sketch the output, Q , of a D latch.

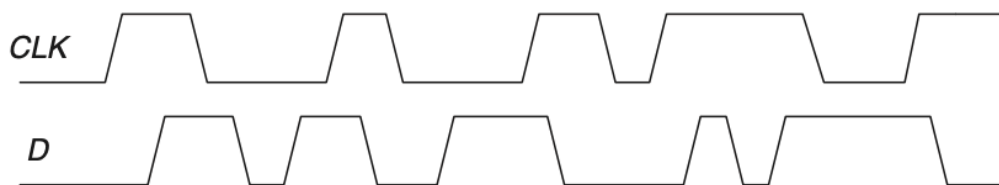


Figure 3.64 Input waveforms of D latch or flip-flop for Exercises 3.4 and 3.6

Problem 3.5 [H&H]

Exercise 3.5 Given the input waveforms shown in [Figure 3.63](#), sketch the output, Q , of a D flip-flop.

Problem 3.6 [H&H]

Exercise 3.6 Given the input waveforms shown in [Figure 3.64](#), sketch the output, Q , of a D flip-flop.