

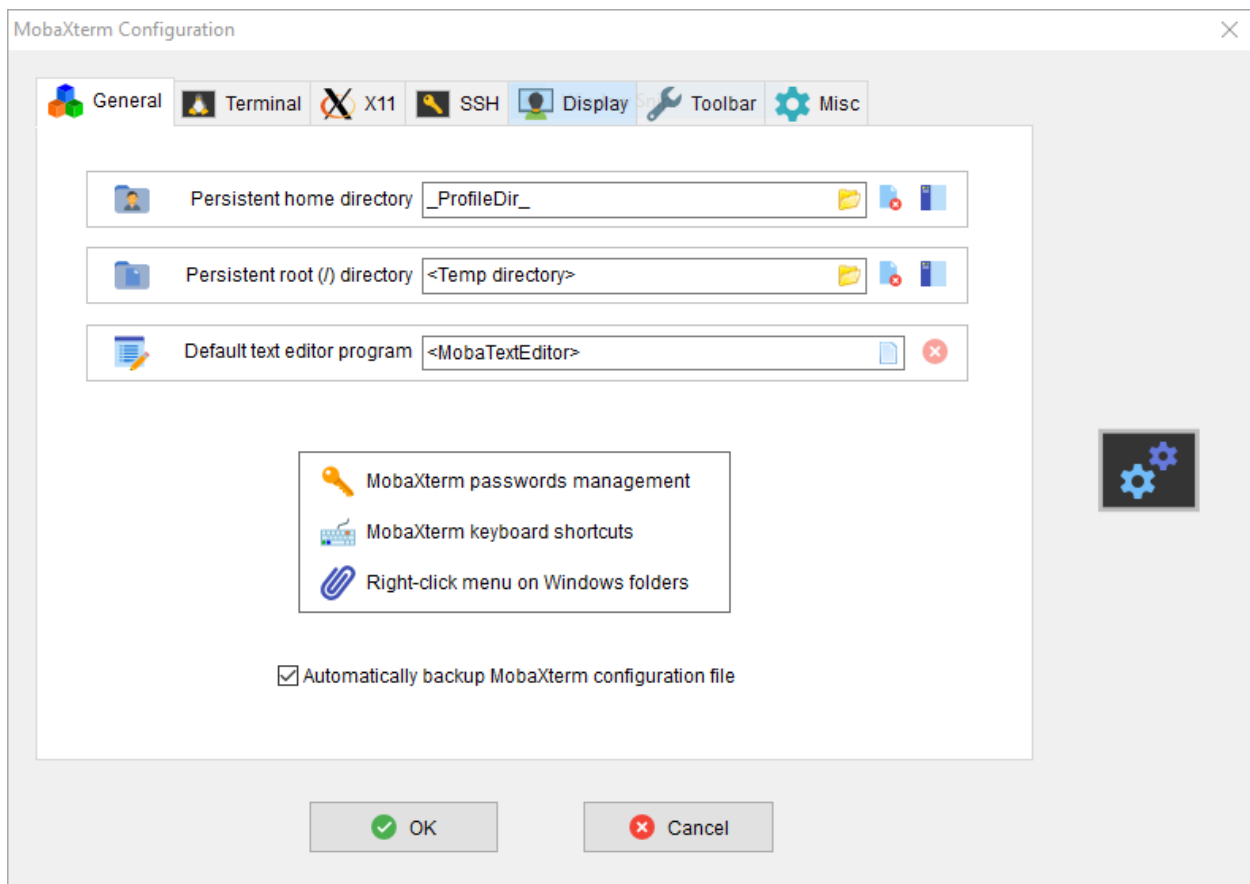
Instructions for Windows OS Users

To use Icarus Verilog and GTKwave as effectively and conveniently as possible you are strongly encouraged to install MobaXterm and configure it as follows:

Setting up the PATH for MobaXterm

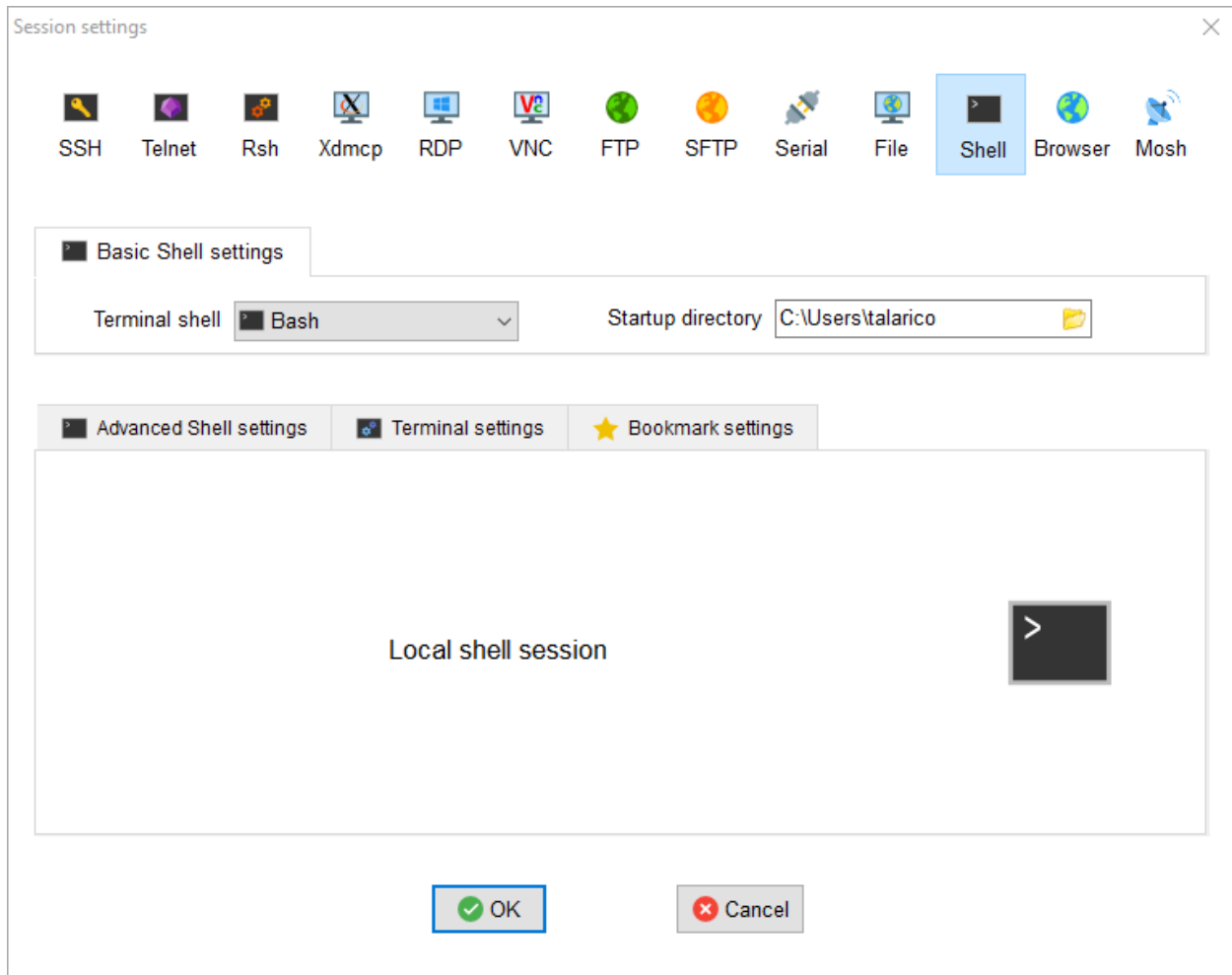
Go to: Settings → Configuration

Set the persistent home directory to your user account:



Set the startup directory for the terminal session to your user account:

Terminal → Session → Shell



Create a `.bash_profile` file with the following content.

```
if [ -f ~/.bashrc ]; then
source ~/.bashrc
fi
export PATH=$PATH:/drives/c/iverilog/bin:/drives/c/iverilog/gtkwave/bin
```

Create a `.bashrc` file with the following content.

```
#!/bin/bash
alias ll='ls -lA'
alias la='ls -A'
```

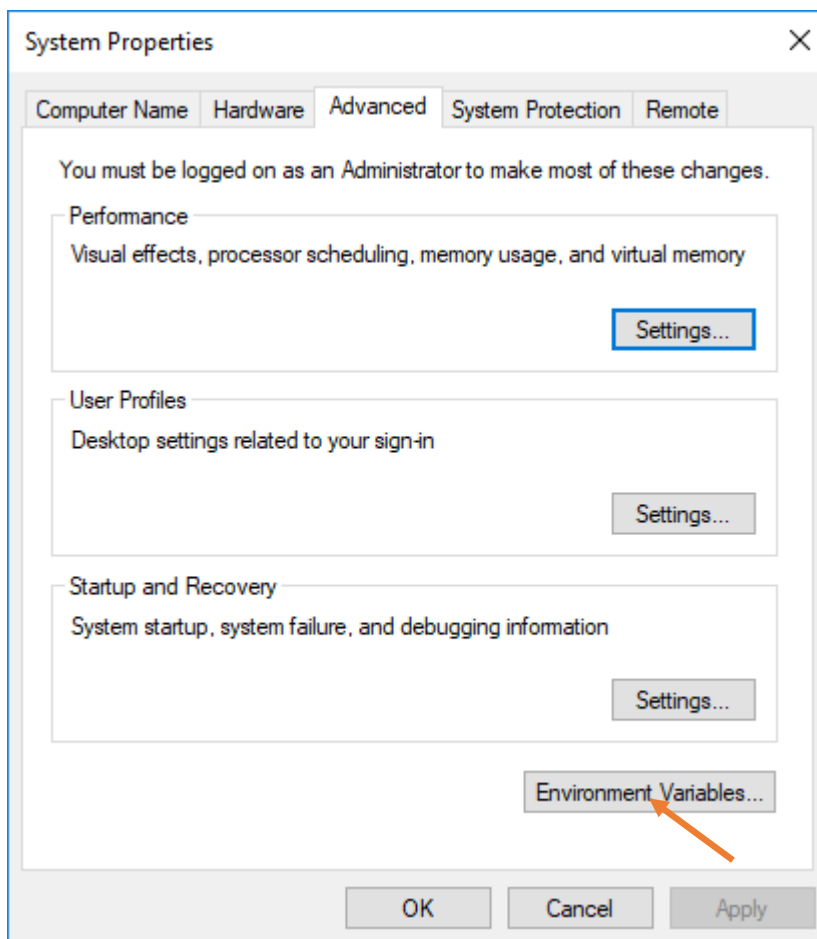
The `.bashrc_profile` and the `.bashrc` files must be placed in your persistent home directory.

Alternative Instructions for Windows OS Users

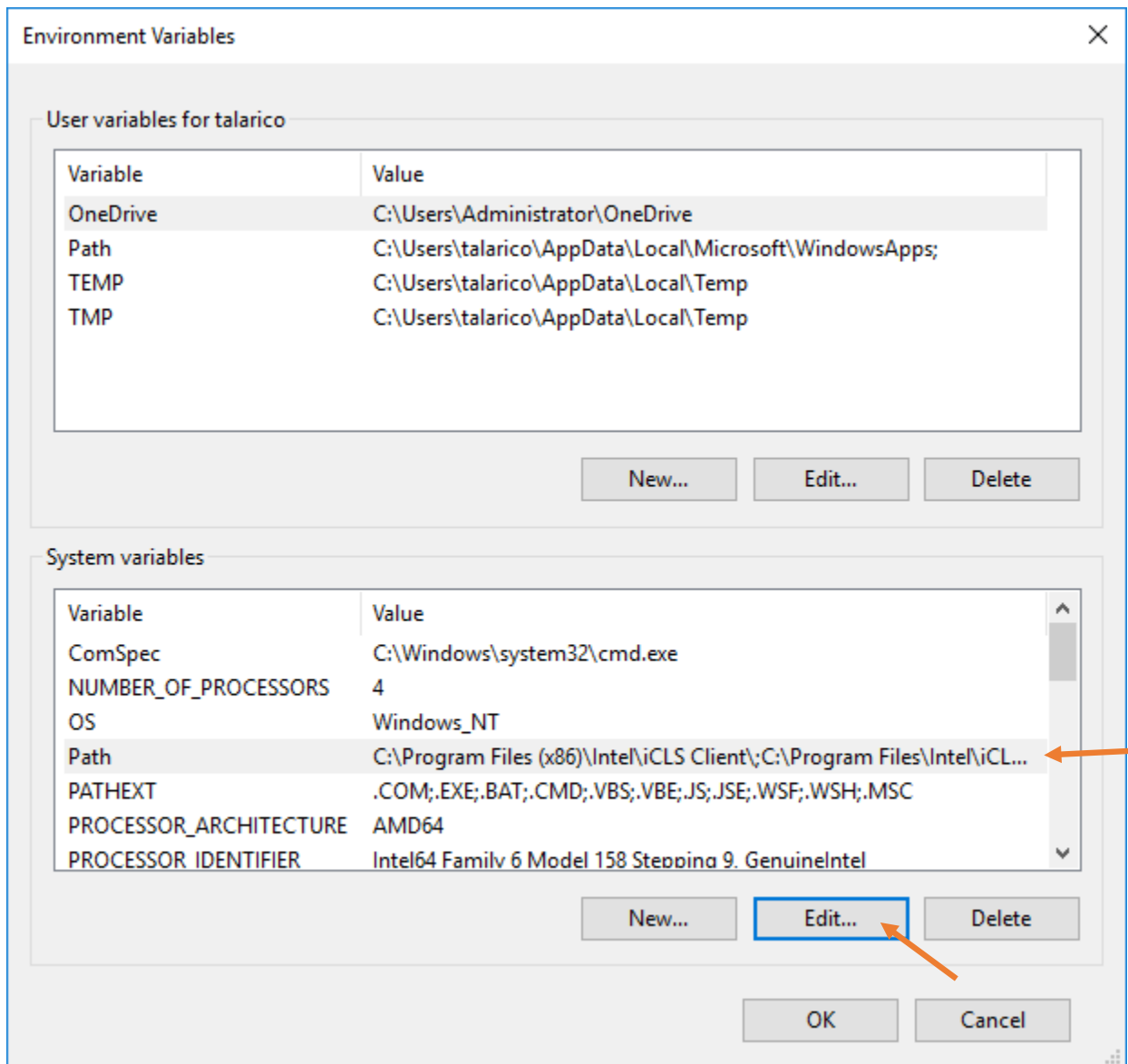
If you decide to do not install MobaXterm, you can invoke Icarus Verilog and GTKwave directly form the Run Command window. However, to use Icarus Verilog and GTKWave as painlessly as possible make sure to configure your machine as follows:

Setting the PATH under Windows OS:

Click on the window symbol and start typing environment variables:



Click on Environment Variables



Go on Path under System Variables and click Edit

Add the two New paths shown at the bottom:

